



2014 HRYRA Women's Challenge Cup

Shattemuc Yacht Club
Saturday, August 16, 2014

SAILING INSTRUCTIONS

1. RULES

- 1.1 The regatta will be governed by the rules as defined in *The Racing Rules of Sailing*.
- 1.2 Class rules are the current *Performance Handicap Racing Fleet Regulations* published by the YRA of LIS, modified to admit rating certificates issued by HRYRA.
- 1.3 All boats must satisfy the *HRYRA Boat Standards* published on the HRYRA web site.

2. SCHEDULE OF EVENTS for August 16, 2014

<u>0830 - 0930 hrs</u>	Registration & breakfast; SYC clubhouse deck
<u>0930 hrs</u>	Competitor's Meeting; SYC clubhouse deck
<u>1100 hrs</u>	First warning signal
<u>Awards</u>	To follow racing; SYC Clubhouse deck
<u>Dinner</u>	SYC Clubhouse (separate reservation and fee)

3. NOTICES TO COMPETITORS

Notices to competitors will be posted on a white board inside the clubhouse.

4. CHANGES TO SAILING INSTRUCTIONS

- 4.1 Changes to the Sailing Instructions will be posted no later than 0930 on the day it takes effect, except that any change to the schedule of races will be posted no later than 1800 on the day before it will take effect and will be e-mailed to pre-registered competitors shortly thereafter.
- 4.2 The Race Committee may modify the classes for the regatta described in Instruction 7 below, based upon the number of registered boats at the close of registration (0930 on Aug. 16th). Any change will be announced at the Competitor's Meeting and will be broadcast via VHF radio no fewer than two times prior to the first warning signal.

5. SIGNALS MADE ASHORE

- 5.1 Signals ashore will be displayed from a flagpole in the vicinity of the marina office (south side of club). (Also visible from www.shattemucyc.org/webcam)
- 5.2 When flag AP is displayed ashore, '1 minute' is replaced with 'not less than 30 minutes' in the race signal AP. This changes rule Race Signals AP.

6. SCHEDULE OF RACES

- 6.1 Three (3) races are scheduled.
- 6.2 Prior to the start to the first warning signal of the day, yachts shall "check-in" with the Race Committee by sailing by and hailing their sail number and their division.
- 6.3 For each class, a subsequent race will be started as soon as practical after the last finisher of the class' previous race. Several sound signals and a VHF announcement will be made prior to the warning signal.
- 6.4 The Race Committee will display Code Flag "A" to indicate "no more racing today."



2014 HRYRA Women's Challenge Cup

Shattemuc Yacht Club
Saturday, August 16, 2014

SAILING INSTRUCTIONS

7. CLASSES and CLASS FLAGS

7.1 There will be four classes as described below.

7.2 Class Flags will be the code flag of the class number. Yachts need not display a streamer or class flag.

Class	Spinnaker	PHRF values	Mixed or All Women	Class Flag
1	Yes	All	All Women	
2	Yes	All	Mixed	
3	No	All	All Women	
4	No	All	Mixed	

8. RACING AREA

8.1 The Racing Area is as shown in Attachment A.

8.2 The approximate starting area, shown on Attachment A, will be in the Hudson River within the vicinity of the Shattemuc Yacht Club, south of Tellers Point, and north of the Scarborough Light. Depending on conditions, the actual position may fall outside that area.

9. THE COURSE

9.1 Courses will be selected from the list in Attachment B. No later than the warning signal, the race committee will display on a course board the course designation. Note that different classes may sail different courses.

9.2 On the course list, a "p" after a mark means leave the mark to port; an "s" means leave the mark to starboard.

9.3 Courses 01, 02, and 03 are windward-leeward with both the start and finish (unless the course has been shortened) line positioned between the windward and the leeward marks.

9.4 **Note:** The start and finish lines will NOT be the same line. (See Instructions 11.2 and 14.1.)

10. MARKS

10.1 Marks for courses 01, 02, and 03 will be large inflatable marks.

10.2 Other courses use the indicated numbered government buoys and marks "X" and "G".

10.2.1 Mark "X" is large inflatable mark located approximately 600 yards southwest of the seaward entrance to Shattemuc Yacht Club.

10.2.2 Mark "G" is a small orange can maintained by clubs in Haverstraw Bay. Its approximate location is shown on Attachment A.

10.3 If a mark is moved during the race, the new mark may be the original mark or a new mark.



2014 HRYRA Women's Challenge Cup

Shattemuc Yacht Club

Saturday, August 16, 2014

SAILING INSTRUCTIONS

11. THE START

- 11.1 Races will be started using Rule 26. (A diagram showing an example of a Rule 26 start with the sound signals and flags used can be found as Attachment C to these instructions.)
- 11.2 The starting line will be between a staff, stay, or halyard displaying an **orange** flag on the race committee boat and the course side of the nearby **red-orange** starting mark, which may or may not have an **orange** flag attached to it.
- 11.3 Classes not starting or racing should stay clear of the Starting Area.
- 11.4 **Note:** The start and finish lines will NOT be the same line (See Instruction 14.1 for definition of finish line.)

12. RECALLS

The Race Committee will attempt to hail the sail numbers of OCS boats after the starting signal. The failure of any boat to hear the hail, promptness of the hail, failure to hail any boats, or the order of the boats hailed shall not be grounds for redress. This changes Rule 62.1.

13. CHANGE OF COURSE

To change the next leg of the course, the Race Committee will lay a new mark (or move the finishing line), or move the original mark, and remove the old marks, if applicable, as soon as practicable.

14. THE FINISH

- 14.1 The finishing line will be between a staff, stay, or halyard displaying a **yellow** flag on the race committee boat and the course side of the nearby **yellow** finishing mark, which may or may not have a **yellow** flag attached to it.
- 14.2 **Note:** The start and finish lines will NOT be the same line. (See Instruction 11.2 for definition of start line.)

15. TIME LIMITS FOR FINISHING A RACE

A boat failing to finish within forty-five (45) minutes after the first boat in her class sails the course and finishes will be scored DNF without a hearing. This changes Rules 35, A4, and A5

16. PENALTY SYSTEM

- 16.1 The scoring penalty, rule 44.3, will apply to a boat electing to take a penalty for a violation of a rule of Part 2. The penalty will be the number of places as described in Rule 44.3(c).
- 16.2 If a yellow flag is not displayed as provided in Rule 44.3(a), a boat may accept a Scoring Penalty as provided for in Section B of Appendix T or the RRS, rule T2.



2014 HRYRA Women's Challenge Cup

Shattemuc Yacht Club
Saturday, August 16, 2014

SAILING INSTRUCTIONS

17. PROTESTS AND REQUESTS FOR REDRESS

- 17.1 A boat intending to protest about an incident that occurs in the racing area shall notify the Race Committee of her intention as soon as possible after finishing, identifying the boat(s) being protested. This changes rule 61.1(a)
- 17.2 Protests shall be in writing and delivered to the Race Committee within 30 minutes after the time of the docking of the Race Committee.
- 17.3 Breaches of Instructions 6.2, 11.3, 19.2, and 19.3 will not be grounds for a protest by a boat. This changes rule 60.1(a). Penalties for these breaches may be less than disqualification if the protest committee so decides.

18. SCORING

- 18.1 The Low Point System of Appendix A will apply.
- 18.2 Yachts will be handicapped using PHRF numbers to compute time-on-time correction values using US Sailing's Standard conversion factors. Each yacht shall have a current PHRF certificate issued by HRYRA or, absent that, by the Yacht Racing Association of the Long Island Sound (YRALIS).
- 18.3 One race shall be completed to constitute a regatta.

19. RADIO COMMUNICATION AND SAFETY REGULATIONS

- 19.1 *VHF Channel 72* is the designated channel for communications between the Race Committee and Competitors. While the Race Committee intends to use the designated VHF channel to supplement its requirements under the rules and clarify the racing procedure, such supplements and clarifications shall be provided at the Race Committee's discretion.
- 19.2 A boat that retires from a race shall notify the Race Committee as soon as possible via VHF radio or oral hail.
- 19.3 Except in an emergency, a boat shall neither make nor receive radio or mobile phone communications not available to all boats.

20. DISCLAIMER OF LIABILITY

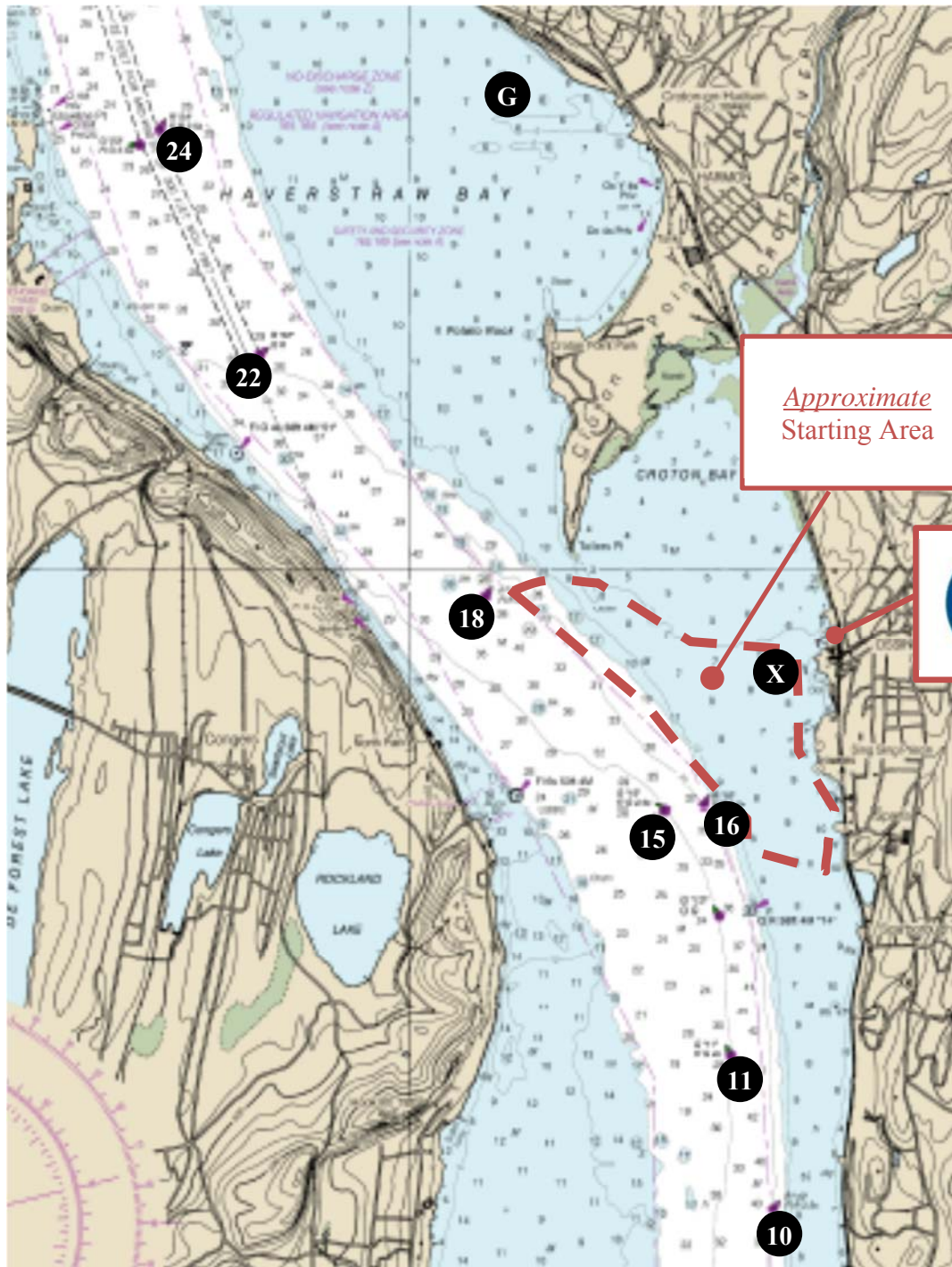
Competitors participate in the regatta entirely at their own risk. See Rule 4, Decision to Race. The organizing authority will not accept any liability for material damage or personal injury or death sustained in conjunction with or prior to, during, or after the regatta.



2014 HRYRA Women's Challenge Cup
Shattemuc Yacht Club
Saturday, August 16, 2014

SAILING INSTRUCTIONS

Attachment A – Approximate Racing Area





2014 HRYRA Women's Challenge Cup

Shattemuc Yacht Club
Saturday, August 16, 2014

SAILING INSTRUCTIONS

Attachment B – Course List

Course Number	Start	Marks	Finish	Nautical Miles (~)	Wind Direction
01	S	Wp Lp	F	Windward/Leeward	
02	S	Wp Lp Wp Lp	F	Windward/Leeward	
03	S	Wp Lp Wp Lp Wp Lp	F	Windward/Leeward	
65	S	15p Xp	F	3.0	SW
66	S	15p Xs 16s	F	4.0	SW
67	S	15p Xs 11s	F	6.3	SW
68	S	15p Xs 11s Xp 15s	F	8.1	SW
69	S	15p Xs 11s Xp 11s	F	10.4	SW
70	S	15p Xs 11s 18s Gp 22p	F	13.7	SW
71	S	10p 16p 11s	F	8.5	SSE
73	S	16s 24p 18p	F	8.6	SSE
74	S	11s 24p 16s 11s	F	15.1	SSE
75	S	11s 24p 18p	F	11.2	SSE
76	S	16p Xs 11s	F	6.2	SSE
77	S	16s 18s	F	3.1	SSE
78	S	16s 22s 18p	F	6.3	SSE
79	S	11s 16p 18s	F	5.6	SSE
80	S	24p 11p 22p	F	16.1	NW
81	S	24p 11p	F	11.4	NW
82	S	24p 18p Xs 11s	F	12.3	NW
83	S	22p 16p Xp	F	7.3	NW
84	S	22p 11p	F	9.0	NW
85	S	24p 18p Xs 10s	F	13.2	NW
86	S	Xp 18p Xp 18p Xp 18p	F	8.9	E
87	S	Xp 18p 16p	F	4.5	E
88	S	Xs 16s	F	3.8	E
89	S	18p Xp 18p Xp 18p Xp	F	8.9	W
90	S	18p 16p Xp	F	3.9	W
91	S	18p 11p Xp 18p	F	8.1	W
92	S	Gp 22p Gp 24p	F	9.5	NE
93	S	Gp 22p	F	4.8	NE



2014 HRYRA Women's Challenge Cup


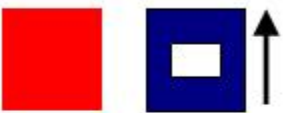


Shattemuc Yacht Club
Saturday, August 16, 2014

SAILING INSTRUCTIONS

Attachment C – Rule 26 Starting Example

Nothing in this example changes Rule 26.

(Red Flag is Class Flag in this Example)

Warning 5 minutes to start		Class Flag goes up	1 Sound
Preparatory 4 minutes to start		"P" Flag goes up	1 Sound
1 Minute		"P" Flag goes down	1 Sound
Start		Class Flag goes down	1 Sound